



North Western Europe Day Ahead Price Coupling Project

NWE Monthly Progress Report

March 2013





Agenda

- 1. Introduction and purpose**
- 2. Overview on Project Planning and Status**
 - a) Procedures
 - b) Testing
 - c) Development Projects
- 3. Progress since last reporting**
- 4. Project Risk list**
- 5. Conclusion**



Purpose

Purpose

The Monthly Progress Report aims at providing regularly detailed information on the project planning and the progress made against the defined project milestones.

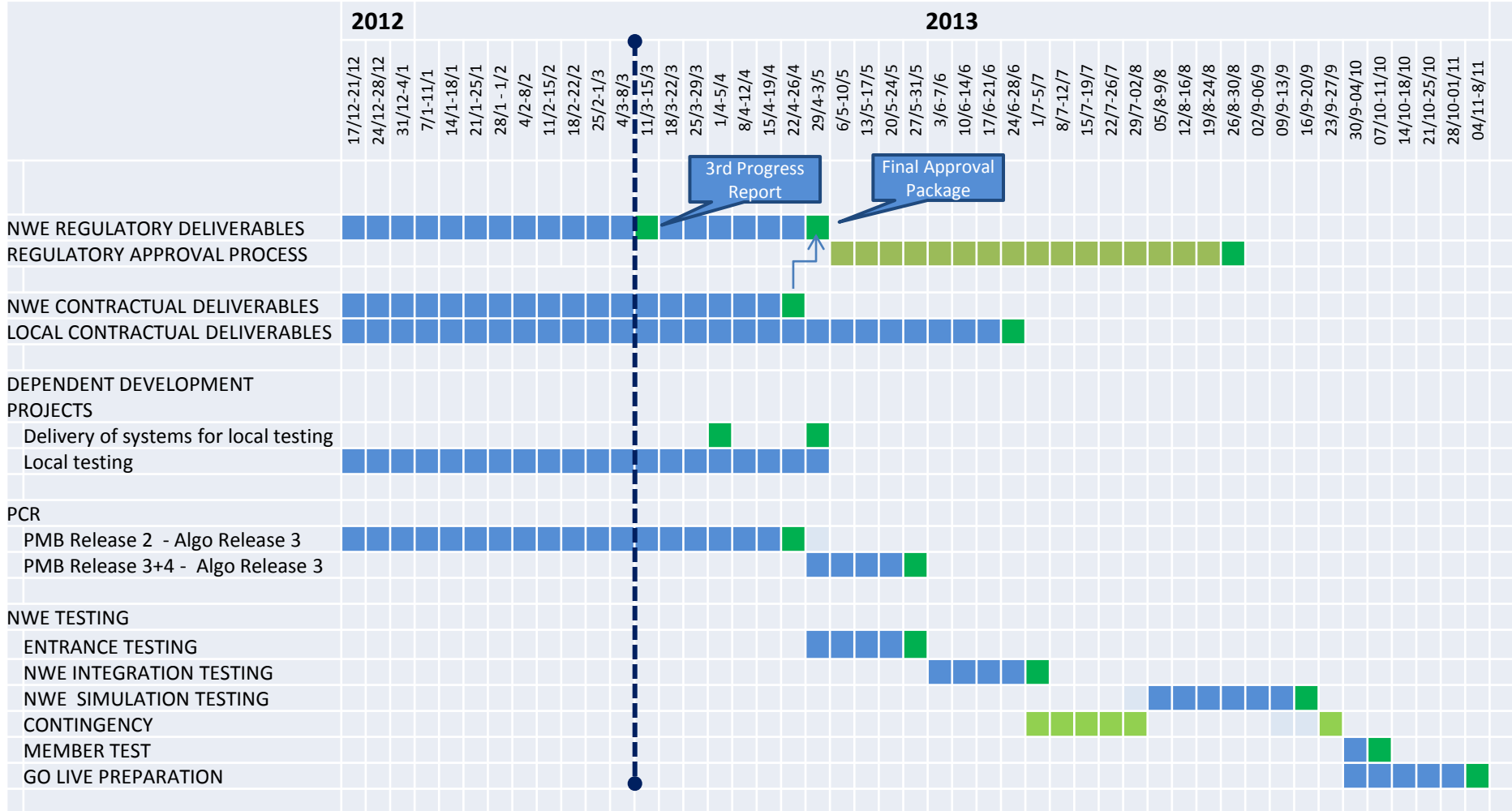
It provides an overview of the status for the following topics:

- Procedures
- Testing
- Local implementation projects

In addition to the Monthly Report, NRAs will receive in March the 3rd NWE Progress Report, in which the deliverables are described in detail.



2) Planning Overview



finished



on schedule
low impact / risk



deadline at risk
medium impact / risk



deadline highly at risk
high impact / risk



2a) Procedures: Planning

	2012						2013											
	29/10-2/11	05/11-9/11	12/11-16/11	17/12-21/12	24/12-28/12	31/12-04/01	07/01-11/01	14/01-18/01	21/01-25/01	28/01 - 01/02	04/02-08/02	11/02-15/02	18/02-22/02	25/02-01/03	04/03-08/03	11/03-15/03	18/03-22/03	25/03-29/03
PROCEDURES																		
Normal procedures	Blue	Blue	Blue	Blue			Blue	Blue	Blue	Dark Blue	Dark Blue	Dark Blue	Dark Blue	Green/White Stripes				Green
Backup procedures			Blue	Blue					Blue	Blue	Dark Blue	Dark Blue	Dark Blue	Green/White Stripes	Dark Blue			Green
Special procedures				Blue					Blue	Blue	Dark Blue	Dark Blue	Dark Blue	Green/White Stripes	Dark Blue	Dark Blue		Green
Fallback procedures							Blue	Blue	Blue	Blue	Dark Blue	Dark Blue	Dark Blue	Green/White Stripes	Dark Blue	Dark Blue	Dark Blue	Green

Deadline for deliverables moved from 01/03 to 28/03, pending PCR timings assessment and NWE discussions on decoupling scenarios.



finished



on schedule
low impact / risk



deadline at risk
medium impact / risk



deadline highly at risk
high impact / risk



2a) Procedures: Current Status

Deliverable	Status		Deadline ^{a)}
Normal (4) Procedures	Except for the timings, for approval by Technical WG.	^{b)}	28/03/2013
Backup (2) Procedures	Except for the timings, for approval by Technical WG	^{b)}	28/03/2013
Special (3) Procedures	Except for the timings, for approval by Technical WG	^{b)}	28/03/2013
Fallback Procedures (3)	2 procedures drafted & being aligned with PCR procedures. Incident management & partial coupling are work in progress.	^{b), c)}	28/03/2013
Other (5)	3 are being reviewed. Market communication and simulation test scenarios are being drafted.		28/03/2013

a) Deadline for deliverables moved from 01/03 to 28/03, pending the PCR timings assessment.

b) For approval except for possible minor PCR timing changes.

c) Agreement on most principles for Incident Committee, pending discussion on TSO participation.



finished



on schedule
low impact / risk



deadline at risk
medium impact / risk



deadline highly at risk
high impact / risk



2b) Testing: Current Status

Deliverable	Status	Delivery	Status
Master Test Plan	Main body approved. All Annexes approved.	28/02/2013	
Entrance/Integration test scenarios	List finalized. Detailing of the scenarios ongoing. Technical constraints to be assessed.	28/02/2013	
Integration tests scripts	Template drafted. Redaction to be split between test TF members.	29/03/2013	
Simulation test scenarios	List under review by Procedure TF. Workshop to be organized test. TF/Procedure TF.	15/03/2013	
Simulation tests scripts	To be started after Integration tests scripts finalized.	30/04/2013	
Detailed daily test plan	Draft plan delivered to Testing TF.	15/03/2013	



finished



on schedule
low impact / risk



deadline at risk
medium impact / risk



deadline highly at risk
high impact / risk



2c) Local implementation projects: Current Status

Deliverable	Status		Deadlines		
			Design	Development	Ready for NWE Entrance Testing
CWE	On schedule		18.01.2013	01.03.2013	26.04.2013
IntraGB (PX-PX)	On schedule		01.01.2013	01.02.2013	01.05.2013
IFA Cable (UK-FRA)	On schedule		06.02.2013	18.03.2013	01.05.2013
BritNed Cable (UK-NED)	On schedule		21.12.2012	29.03.2013	03.05.2013
NorNed Cable (NOR-NED)	On schedule		29.01.2013	01.04.2013	29.04.2013
DK1-GER Cable	On schedule		-	04.03.2013	26.04.2013
Kontek Cable (DK2-GER)	On schedule		15.03.2013	08.04.2013	26.04.2013
Baltic Cable (SWE-GER)	On schedule		31.03.2013	08.04.2013	26.04.2013



finished



on schedule
low impact / risk



deadline at risk
medium impact / risk



deadline highly at risk
high impact / risk



3) Progress since last reporting

- Fallback HLAs for CWE, GB and Nordic-Baltic finalized and approved.
- Local test lists based on HLAs finalized and approved.
- Losses study: simulations finished, analysis and report in progress.
- Roll back organization close to finalized.
- Roll back check list first draft delivered.
- First Joint SWE - NWE meeting scheduled.
- Market Participant consultation on specific process timings on going.
- External communication information package finalized and approved.
- 3rd Progress Report finalized and approved.



4) Project Risk List

- Timing issues and constraints in rare fall back scenarios, depending on Market consultation outcome.
- Systems not ready / not all local tests performed by the subprojects before start of entrance tests: risk to identify issues in entrance tests that should have been found in local tests, which can delay the NWE testing.
- Not all systems ready with final system releases by start of integration tests: risk that more regression testing will be needed, having impact on the duration of the test and the test resources.
- Shortage of test resources / test environments due to lots of test activity in parallel (PCR, NWE, CWE flow based, other local project testing).
- Compliancy of the shipping arrangement with the future CACM NC (pending further investigation).
- Regulatory approval process
 - If not all NRAs give their approval timely and local decisions are not coherent with each other, NWE target planning of go-live cannot be uphold.
 - Need for good coordination between NRAs.



5) Conclusion

NWE is still on schedule in accordance with the target planning of go-live in November 2013 with the feasible scenarios and timings in accordance with last reporting.