



North Western Europe Day Ahead Price Coupling Project

NWE Monthly Progress Report

February 2013





Agenda

- 1. Introduction and purpose**
- 2. Overview on Project Planning and Status**
 - a) Procedures
 - b) Testing
 - c) Development Projects
- 3. Progress since last reporting**
- 4. Project Risk list**
- 5. Conclusion**



Purpose

Purpose

The Monthly Progress Report aims at providing regularly detailed information on the project planning and the progress made against the defined project milestones.

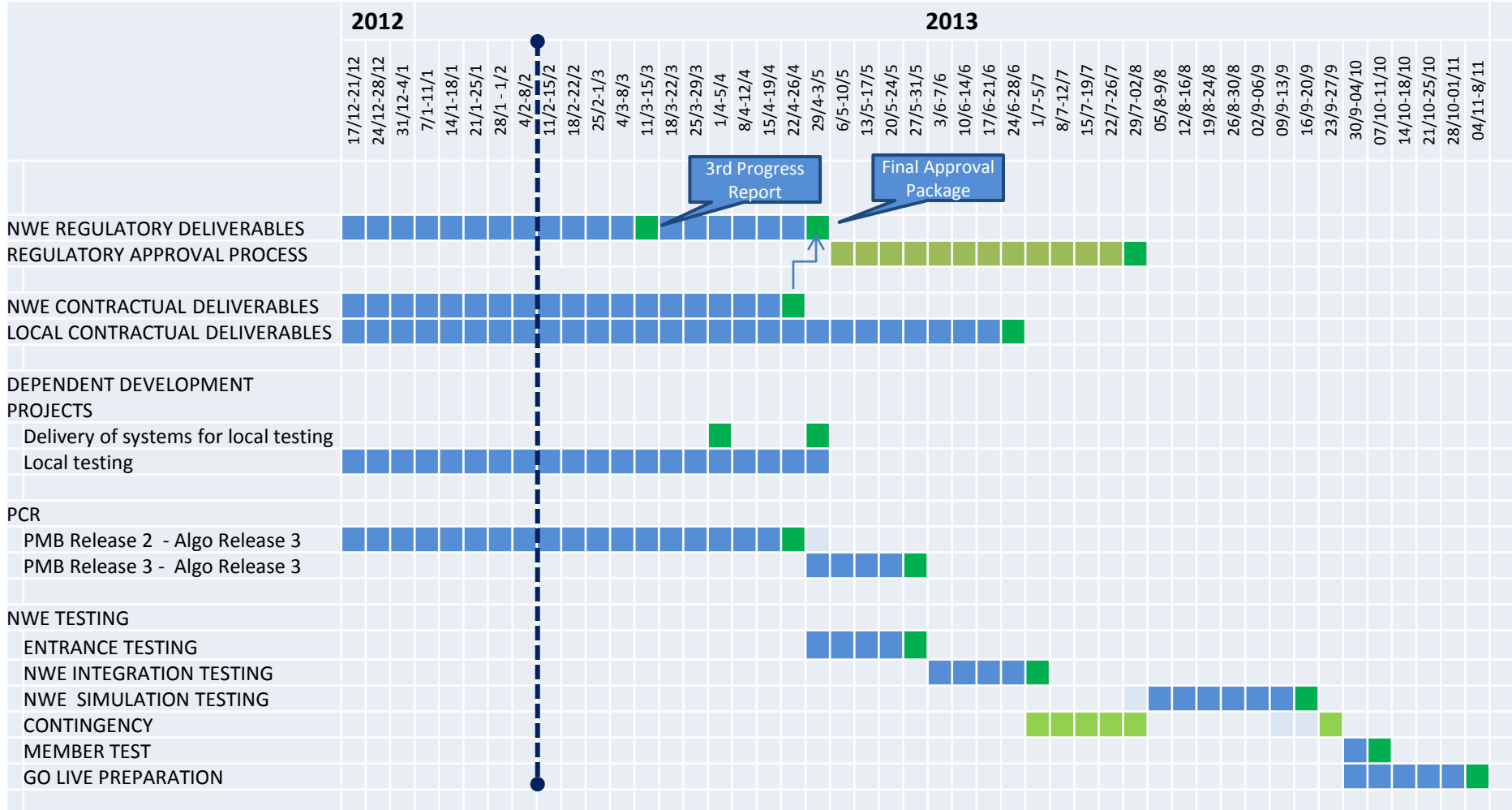
It provides an overview of the status for the following topics:

- Procedures
- Testing
- Local implementation projects

In addition to the Monthly Report, NRAs will receive in March the 3rd NWE Progress Report, in which the deliverables are described in detail.



2) Planning Overview



finished



on schedule
low impact / risk



deadline at risk
medium impact / risk



deadline highly at risk
high impact / risk



2a) Procedures: Planning

	2012						2013								
	29/10-2/11	5/11-9/11	12/11-16/11	17/12-21/12	24/12-28/12	31/12-4/1	7/1-11/1	14/1-18/1	21/1-25/1	28/1- 1/2	4/2-8/2	11/2-15/2	18/2-22/2	25/2-1/3	4/3-8/3
PROCEDURES															
Normal procedures															
Backup procedures															
Special procedures															
Fallback procedures															



finished



on schedule
low impact / risk



deadline at risk
medium impact / risk



deadline highly at risk
high impact / risk



2a) Procedures: Current Status

Deliverable	Status		Deadline
Normal (4) Procedures	Except for the timings, for approval.	a)	01/03/2013
Backup (2) & Special (4) Procedures	BUPs: except for the timings, for approval. SPEs: drafting in progress.	a)	01/03/2013
Fallback Procedures (6)	2 procedures drafted. Ongoing discussions with PCR on principles for incident committee and partial/full decoupling.	a), b)	01/03/2013
Roll back checklist (1)	In progress. Moved to Rollback TF.		01/03/2013
Other (5)	In progress. Change control procedure added.		01/03/2013

a) For approval except for possible minor PCR timing changes.

b) The conclusions for investigation of options to meet 15:30 nomination deadline show that not all scenarios can be facilitated (see separate slide set “20130213 -NWE JSC- NWE Process timings”).



finished



on schedule
low impact / risk



deadline at risk
medium impact / risk



deadline highly at risk
high impact / risk



2b) Testing: Current Status

Deliverable	Status	Delivery	Status
Master Test Plan	Finalized on the test TF level Approval Technical WG expected 11/2	01/02/2013	
Entrance/Integration test scenarios	List drafted. Still subject to change based on fallback principles adopted (cases/procedures) Detailing of the scenarios ongoing	15/02/2013	
Simulation test scenarios	List drafted. Feedback gathered from procedure TF. Drafting of detailed scenarios depending on delivery of the procedures	25/02/2013	
Integration tests scripts	Template to be drafted Redaction to be split between test TF members	25/02/2013	
Simulation tests scripts	To be started	22/03/2013	
SWE integration in testing	Criteria and organization with SWE are being drafted	28/02/2013	
Detailed test planning (day by day)	To be started	31/03/2013	



finished



on schedule
low impact / risk



deadline at risk
medium impact / risk



deadline highly at risk
high impact / risk



2c) Local implementation projects: Current Status

Deliverable	Status		Deadlines		
			Design	Development	Ready for NWE Entrance Testing
CWE	On schedule		18.01.2013	01.03.2013	26.04.2013
IntraGB (PX-PX)	On schedule		01.01.2013	01.02.2013	01.05.2013
IFA Cable (UK-FRA)	On schedule		06.02.2013	08.03.2013	01.05.2013
BritNed Cable (UK-NED)	On schedule		21.12.2012	15.01.2013	03.05.2013
NorNed Cable (NOR-NED)	On schedule		29.01.2013	01.04.2013	29.04.2013
DK1-GER Cable	On schedule		-	-	26.04.2013
Kontek Cable (DK2-GER)	On schedule		27.03.2013	-	26.04.2013
Baltic Cable (SWE-GER)	On schedule		01.03.2013	-	26.04.2013



finished



on schedule
low impact / risk



deadline at risk
medium impact / risk



deadline highly at risk
high impact / risk



3) Progress since last reporting

- Master Test Plan finalized and approved
- Fallback HLAs close to finalization
- Rollback discussions started with EMCC
- Integration of SWE in NWE testing started
- Draft answers to NRA questions sent 06/02

See 3rd Progress Report (March) for more detailed information.



4) Project Risk List

- Dependency on development and testing of local / regional implementations
 - Readiness of all systems and interfaces at the start of NWE testing.
- Timing issues and constraints in rare fall back scenarios (see separate slide set)
- Regulatory approval process
 - If not all NRAs give their approval NWE can not go live
 - Need for good coordination between NRA's



5) Conclusion

NWE is still on schedule in accordance with the target planning of go-live in November 2013 with the feasible scenarios and timings as presented in separate slide set (“20130213 -NWE JSC- NWE Process timings”).